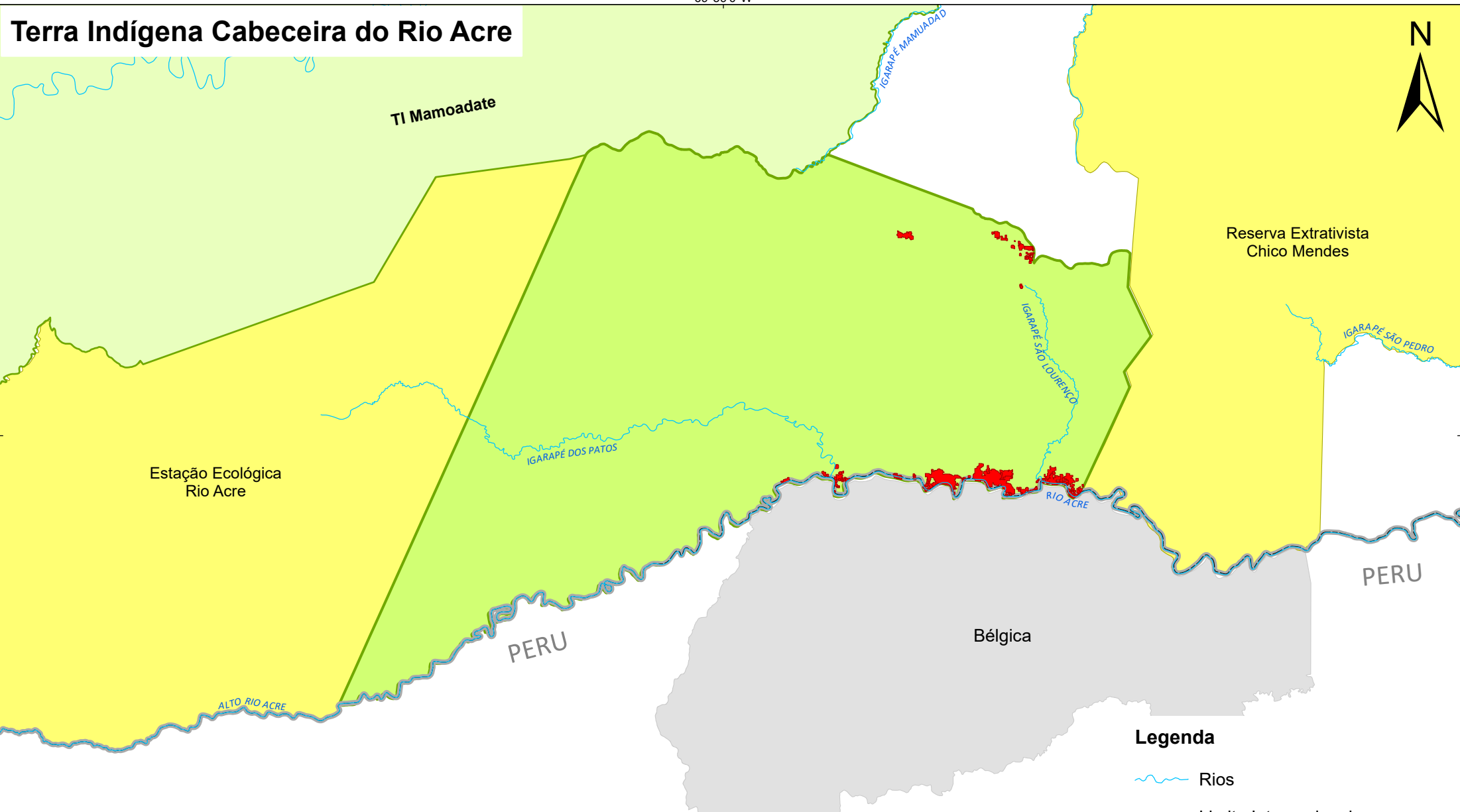


# Terra Indígena Cabeceira do Rio Acre





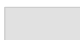

69°59'0"W

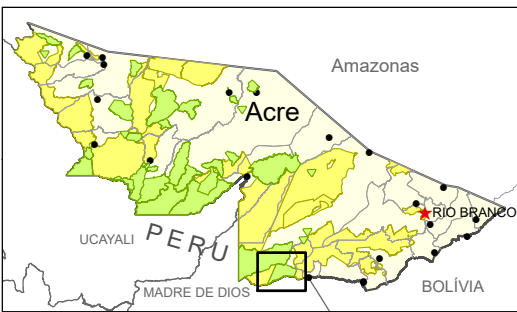


10°54'0"S



## Legenda

-  Rios
-  Limite Internacional
-  Terras Indígenas
-  TI Cabeceira do Rio Acre
-  Unidades de Conservação
-  Comunidade Nativa (Peru)
-  Acumulado 2007-2017 - 702 ha



0 3 6 9 KM

Sistema de Coordenadas - Datum: WGS 84