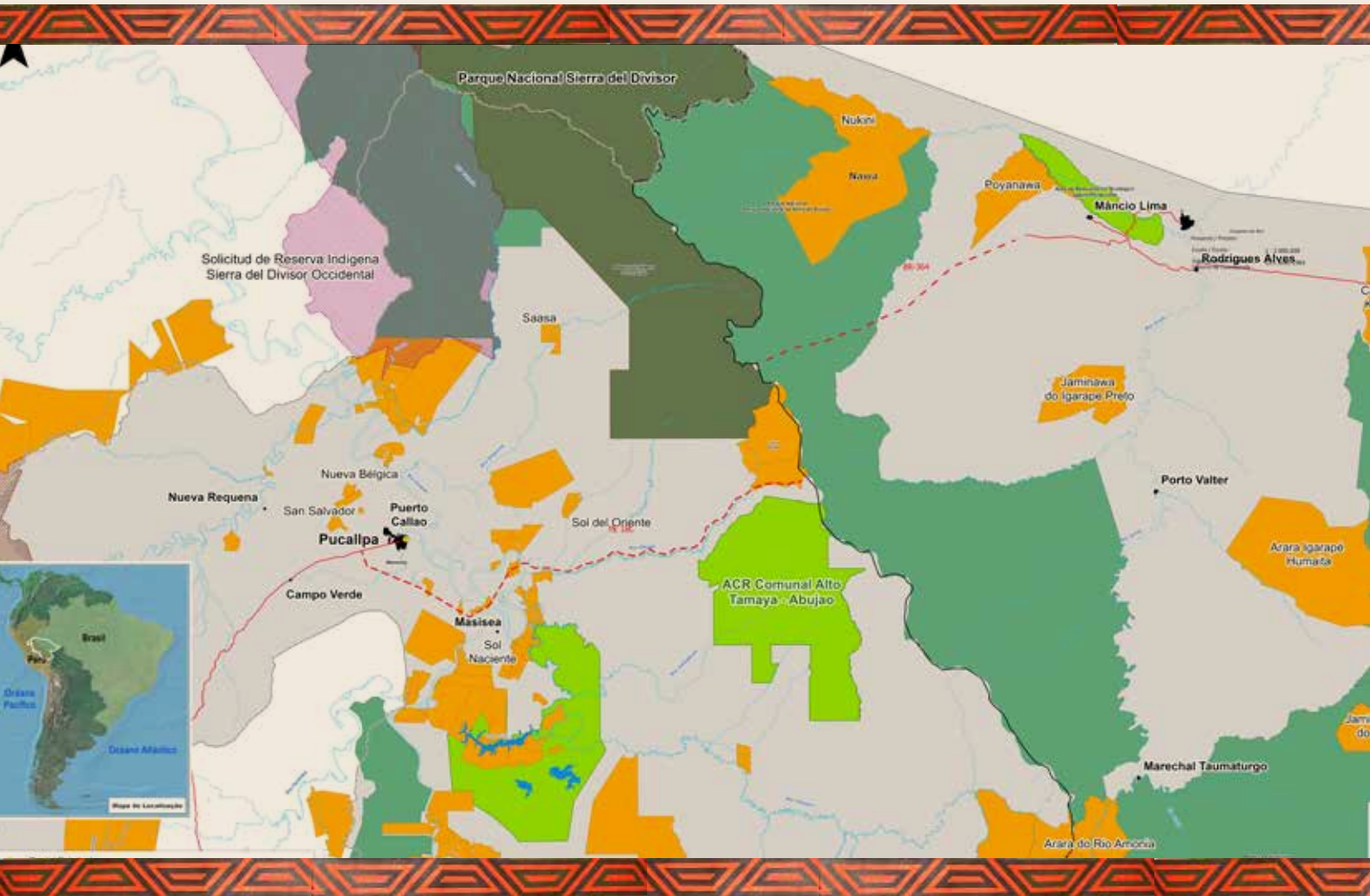


Krosero Tosuwo - Pucallpa

Hkawhuxikowaka Hosha



1 Klu hatnuhapopni
xiye?

2 Himtuklewatatshri

3 Panerune mkoheje há
payrine himtukalune

5 Hi hkahwakpiratka leyi,
hi rawa hatnuhapo

7 Kahwakpinri,
hepomhalu
Mitshikananu,
mimaletkotu há
runkaklexikolu



BR 364 - Hatnuhapo BR-364 hyinuwaka kamhaletka 1961, Limerera potshi, sanpawlo hyinuwujya há minajerayisu, moto kroso hiyrunu hontoninya hyapamta hate hewi hakri rapoka.

KLU HATNUHAPOPNI XIYE?

Hatnuhapo BR – 364 sotlumatkani hate krosero sowo potkshi, hakre. Herotu shinikantshi kamhakalurupa hatnuhapo rapokanru hkanipretshijixyawaka pero tshijneya, hyoptokajyawakapa hatnuhapo tsrukakalune hipxakatshine kamhapiratanru hyinuwajinri hkanipretshijnexyawaka hate pokalpa potshi.

Halikalutni xye shinikantshi hatnuhapokamhikolupa mitshikawalututkani panerune hiyrunu payrine wanestsi hwatshine hihimnanhatka wale pirana payri sreta hwatshineya. Wale shinikantshi kamhajatatshinni trukakalune potuko seyni hi rawa yijnaklu shinikantshi wanestsi hwatshineya himtukalunepa, hi hkahwakpiratka hixko wyostayehitjero leyi

hepomhalu hike mkojwakanutu, mitshikanunhapka, runkaklexikowaka hike weyawlu mwakatuya. Hikoxa rawa satu histoto tshiji hosha himtukatshri pirana hi koxa ruhle hetletka hosha klu rumukata hepixlewlexya rumukata kamhelexikowakapa hatnuhapo sotlumtayma!

Wimatlu xye hatnuhapo yinuwaka kamhalexikwaka tshiji kaniprrxyawaka prasuwo, polipya há pero, kakojru halukatshineya wale tshiji hwajetatshineya. Hewiko hwatshineya xye hatnuhapo hi hipojinna hihlewlw. Katu tsonu rumukata hihleyehreta pnushpajikatshine hosha hwatshri pohirewlu, hi kyapreyehipna hosha hwatshri rawyawakna, repixanru jihlokashataxripa tshiji, hahmunapni rawanu há horo koxa wanu. Seyni xye hatnuhapo

himapokannru kojwawatshi tshijipni rumtukanu hi ruknohanu wale klutshinanu, wane pnte rawa pimrikaka kojwawaktshi, wale shinikantshi hi leyi tshinyawaka hkamha hosha tshinanu há rumtuklu koshtoyisawo weterawo 1988.

“ Hatnuhapo krosero tosuwo Poktshi-pokalpa, walerhe xawaka hepixlewatatshri ho reneka mixkonutanwu hixa panerunwu ho rumtukashatanru ho rumtukashatanru ptowru shako? ”

Benki Piyāko

Yorenka tasorentsi kosekatshri

SATKAKA HIMTUKLEWATATSHRI

- ◆ Hyohnikawna hosha kayjikolu
- ◆ Hyikmakanru wene, Rapha hiyrunu hipowha, hitxannu ramamtakaknru honha higlenha
- ◆ Hyohnikawnanu hamewlu
- ◆ Tshiji hiptshitshakle mkojkaka, hoshkaka
- ◆ Rujha yehitko hosha myoxjexikowakapa
- ◆ Rumukata hitakletlu hnikawniywka kakojeru hiwekatshine nikalune há hosha, satkaka hiwekattshri rumukata nikatletna wanesha hwatshine ho nikawna Piratatshti hnikatpotutna
- ◆ Hejnune hkojwaka hiwekletna, ho rumukata hiylatkotna hejnune hatnuhapo koprutatshine
- ◆ Hixantshi ramtakakna
- ◆ Patshwalu rapokakna
- ◆ Hkosekkluna hahmuna stsihi kwaklerune ho nikaluhatatshine wutshitkone
- ◆ Hi kyapreyehipna jitaklewaklerune mutshitkone
- ◆ Hi kyapreyehipna hjihlojyapna tshiji ktsho whuklerune

“Hi rushpakawa xye hatnuhapo wimata piranatatkalu hixo poyine kammaneklerune tsru tshiji ranjixyawakna há tsru hoshni hkaykana. Tsru potuklu rumukata himtukletluna hasentamento hwatshine payrine há panerunkaka tshijne, xye hatnuhapo wtshjnestsyapanu. Waleni satu kojwawaklu mahatkatupa, klutshinanu xye hatnuhapo yohnikatanru kamrurtshikaka mutshitkotuha rumtukanru wunu jiwuta, rakakanru wnikale”.

Railson Nawa

Poktshi kojekatshri TI Nawa

Pimatluhe satu hatnuhapo, rakanhakaklu pimrikaka, hyohnikatpotumtlu himteklewlu?

Rakanhiywka: ruhlehimatletko pahixanune-mkoje hiwekle himtukatshripahepe hatnuhapone Pokalpa, Pero há krosero to sowo, Prasuwo



PANERUNE MKOJE HIYRUNU PAYRINE HIMTUKALUNEPA

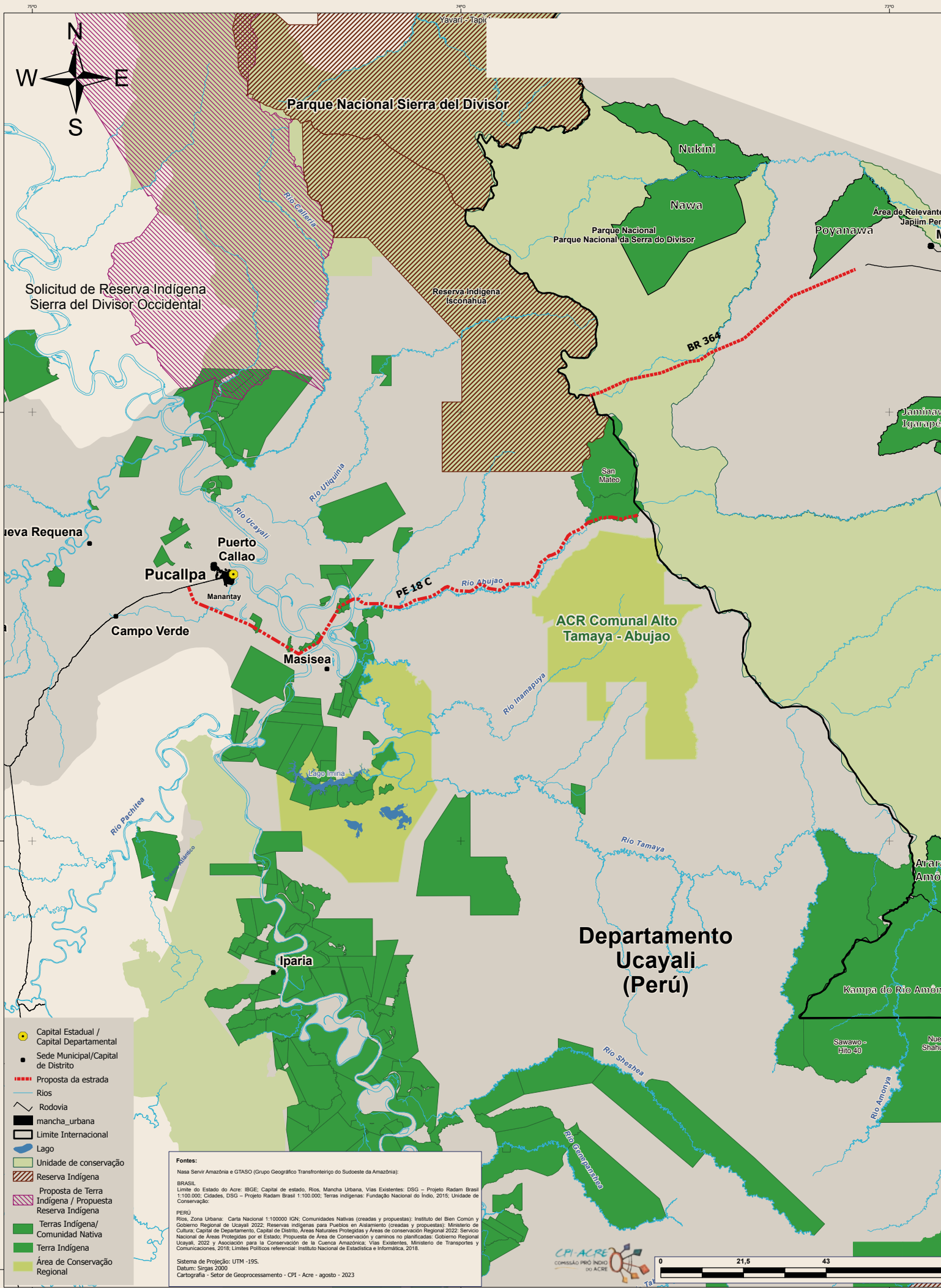
Shinikantshi hatnuhapo kamhikolu himtuklu panerunkaka tshijne yostayehitatshri, há payrine Poktshikaka wanestsi hwatshine hiyrunkoxa hosha hislahikolu pirana rumtukanu.

Hkamhakoklunu, hatnuhapo himtukanru PARNA seha xiwiso há panerunkaka tshijne Poyanawa, Nawa, Nukini. Rumukata hitakletlu koxa há Tis yaminawa rapha ksajiru hajene, pamlo nerune hamonya wenne hajene, kashinawa/Hashanika prewo wenne hajene, há wanehajeneko payrine mitshikawako wane hwatshine há hesewa hishtratshiwista shorowa wenne hawakate Hajene há shinikantshi hasentamento hawayi, sanpetro há Paraná mowra Hajene.

Hosha hajene tshijne hyostakamtanu hesewa hiskonawa é hesewa komonalu tamayo hawakate hwatshine hapojawo, hipnuteko Poktshikaka sawo matewo há kahwuru hokayali, hashanika nerune hiyrunu shipipokonipo, Pero.

“ Tsrushawaka hosha hajene panerunkaka rapatjexinrina hosha hajene hyostayehitna hmamalujyawakluna hatnuhapo, hinkakluya hixo piranru ruylujexikowakanna hatnuhapo kamhalpapkokaka wanna panerunkaka hosha hajene. Hiyrunukatkaka waltlu tsruhixikatshriwa hshinikanu hnikaxikowaka panerkaka wale shinikantshi mitshikanano tsruhixikatshriwa hyima ruylakajinna papkoklu. Xye hatnuhapo xyeshinikantshini, rushpajinpakni, rumukata wimolene hosha hajene tshijne hnikaxyawaka kaniprekajyawaka Prasuwo peroyma. ”

Angela Kaxuyana,
Poktshi kojekatsfri Kahyana



Solicitud de Reserva Indígena Sierra del Divisor Occidental

Parque Nacional Sierra del Divisor

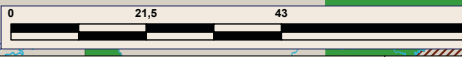
Parque Nacional da Serra do Divisor

ACR Comunal Alto Tamaya - Abujao

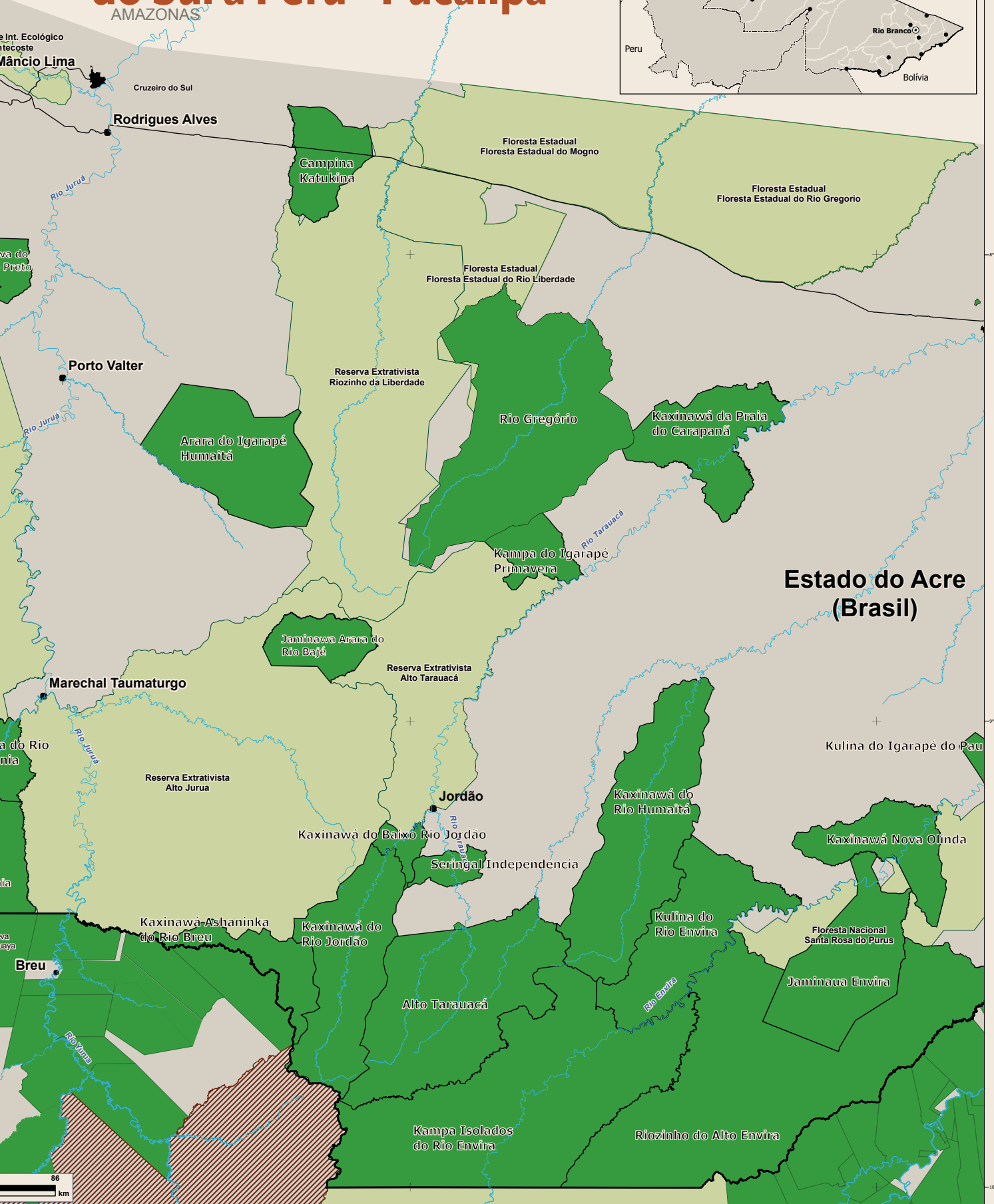
Departamento Ucayali (Perú)

- Capital Estadual / Capital Departamental
- Sede Municipal/Capital de Distrito
- Proposta da estrada
- Rios
- Rodovia
- mancha urbana
- Limite Internacional
- Lago
- Unidade de conservação
- Reserva Indígena
- Proposta de Terra Indígena / Propuesta Reserva Indígena
- Terras Indígenas/ Comunidad Nativa
- Terra Indígena
- Área de Conservación Regional

Fontes:
 Nasa Sevir Amazônia e GTASO (Grupo Geográfico Transfronteiriço do Sudoeste da Amazônia);
 BRASIL
 Limite do Estado do Acre: IBGE; Capital de estado, Rios, Mancha Urbana, Vias Existentes: DSG - Projeto Radam Brasil 1:100.000; Cidades, DSG - Projeto Radam Brasil 1:100.000; Terras indígenas: Fundação Nacional do Índio, 2016; Unidade de Conservação;
 PERÚ
 Rios, Zona Urbana: Carta Nacional 1:100000 IGN; Comunidades Nativas (criadas y propuestas): Instituto del Bien Común y Gobierno Regional de Ucayali 2022; Reservas indígenas para Pueblos en Aislamiento (creadas y propuestas): Ministerio de Cultura; Capital de Departamento, Capital de Distrito, Áreas Naturales Protegidas y Áreas de conservación Regional 2022; Servicio Nacional de Áreas Protegidas por el Estado; Propuesta de Área de Conservación y caminos no planificados: Gobierno Regional Ucayali, 2022 y Asociación para la Conservación de la Cuenca Amazónica; Vías Existentes: Ministerio de Transportes y Comunicaciones, 2018; Límites Políticos referencial: Instituto Nacional de Estadística e Informática, 2018;
 Sistema de Proyección: UTM -19S.
 Datum: Sirgas 2000
 Cartografía - Setor de Geoprocessamento - CPI - Acre - agosto - 2023



Jinikantshi hatnihapo yapatshripa Brasil-Cruzeiro do Sul a Peru - Pucallpa





HMAKAHWAKPIRATKOKLUPU WYOSTA YEHITJERU, HI RAWANU HATNUHAPO

Satu hatnuhapo kamhikowakapa hkahwakpiratko leyi. Leyi wantshina hi hkamhakawa hatnuhapo sotlumta mitshikananhapa tsrukakalune kamhanru satu hishtoto rekahixyawakapna klu kihleru hapokanu hatnuhapo kamhakoklunupa há hwnru koxa, hipejnu tiyiro saletkopa. Rimaxikowakapa klu hwalu hepiklewatatshri há hwenru mitshikananu rushikanretanna tsrukakalune hatnuhapo mumtuklewaxyawakapa.

Xye hishtoto hiwakaxinrupa há hishtoto hakakalutpotu, hepiklewatatshri há hosha (EVTEA). Tsrukakalune rujhaluna panerunkaka waneko hwajetatshine payrine himtukalunepa wale shinikantshiya repomhikowakna. Yijnako shinikanrukaka hekhitanru hanu wixa himukata haluklexyaplu hkahwakpiraxikowa wale shinikantshi hishinkanretkaru. Xye Hishtoto kamhakaluru hatnuhapo kamhilupa krosero sowo há pokalpa tsrukakalune hi

satu yijnuko shinikanrukaka ho hepomhalu hkamha panerunkaka waneko hwajetatshine payrine kahwakpiratka ,há wohkanisasawo penerunenu yorowa hajene (OPIRJ), kowortenasawo panerunkaka tsrusha hosha hwatshine ptohi prasuwoya (COIAB), konselyo nasyonawo popolasawo hishtratshiwista (CNS), komisawo prohinxyo hakre hajeeu (CPI-Acre), há hasosuyasawo SOS hamasonya hapatjetna rekahixyapluna ptowru yinwru hexyawakaplu (ACP) joshtshisa weterawo-yma. Xye ACP hijha yehitlu joshtshisa hi satu saletlu hwanu kontrato kamhaka hate satu hishtoto mwapshinika tsrukakaluneya hkamhakoapa hishtoto rujhiywakaplu leyi tshinyawaka kamhikowakapa konsowta mkojwajikowaka shinikantshi mitshikananu hapka hikakaluru. Hkahwakpiratkopna hosha hajene panerunkaka.

Há tsrukakalune Potukalunkaka hixikatshine hepixlu hixolune hanjitanru hatnuhapo mkamhikowakanupa. Ruhlepokotlu há hpohijetlu hmakamhikowakanpatka xye kamhakalurumkapa n.130/2021, rimatka hi hpoyahkakanu xye kamhakalurupa DNIT tshinanu hi kihleplu, walekakni himtuka há ruhle hijha piranatkaluru mitshikananu hosts tshinanu , há rujha hshinikanuxikowakna Wanessa poktshi hajene. Há potukalune koxa himaletlu IBAMA hma kamhakjixikowakatshi psoji BR-364 hma yijnako hshinikanutkoklunupsinikna panerune , payrine há poktshirkaka wanestsi hajene há howuka yaka hwatshine wale kamhakalurupa mumtuyawakanupna , Funai mkamha pshiniklu wale pirana há rawna koxa n. 64 hexikolu hosha hajeneya Tapada tshikaluruya rapha, rimatpotuxikowakapna hosha hajene wale shinikantshi kamhikolu himtukanru hosha hajene hwawakle.

KAHWAKPINRI, HEPOMHALU MITSHIKANANU, MIMALETKOTU HÁ RUNKAKLEXIKOLU

Hyijnako hshinikanuxikowakna satni xireito panerunkaka há komonitatshi traxishyonawo runkajikowakapna há repomhikowakna hkamhakoklunupa pajixanu tshiji himtukatshripa ho wiwekle.

Xireyito pepomhakolupa há karantshitkalurni satni lejislawo kamhakalurni hyostayehixikowaka wale nanwaka yokanaxnawa há xireyito panerunkaka wkamhanru walujyawaka wtshijneya.

Rujhalu tsrukakalune repomhiywakna panerunkaka hma kamhapshinikko pahixanu, ptowru yineru halukanru kakaya, hixo yinne shinikannu, go yokanaxikowakaya o lelishlatshiwa wixannu himtukatshri, wiwekle ho wtshijne.

“*Tsrukakalune kamhakaklu hosha kajexikowakapa hihlewlu hiwakaya, seyni hi ptowru yineru tshinna phurunenu tsonni mixone hi koxa rawa satu hishtoto wimaxinrupa . Há wimatlu hi kihleplu yine tshinanuya hatnuhapo hi hanikanru pohirewlu hewi hajeneya. Hewi wiywaka rawanu pohirewlu seyni hi hewihajenenupnu pnuko hishpakatshine pohirewatanu. Walekni hi waluka hi walujyawaka kamhatshripni.* **”**

Francisco Piyāko
Tsruxikatsiriwa OPIR]

“*Hixakta wujhalu wyijnako hshinikanuxikowakapa, wpiklu wjihlokapjixikowaka wma mimaxyawakanu.* **”**

Railson Nawa
Poktshi kojekatsiri



HEPOMHALU MIMALETKOTU, MITSHIKANANU HAPKA HINKAKLETKALURU

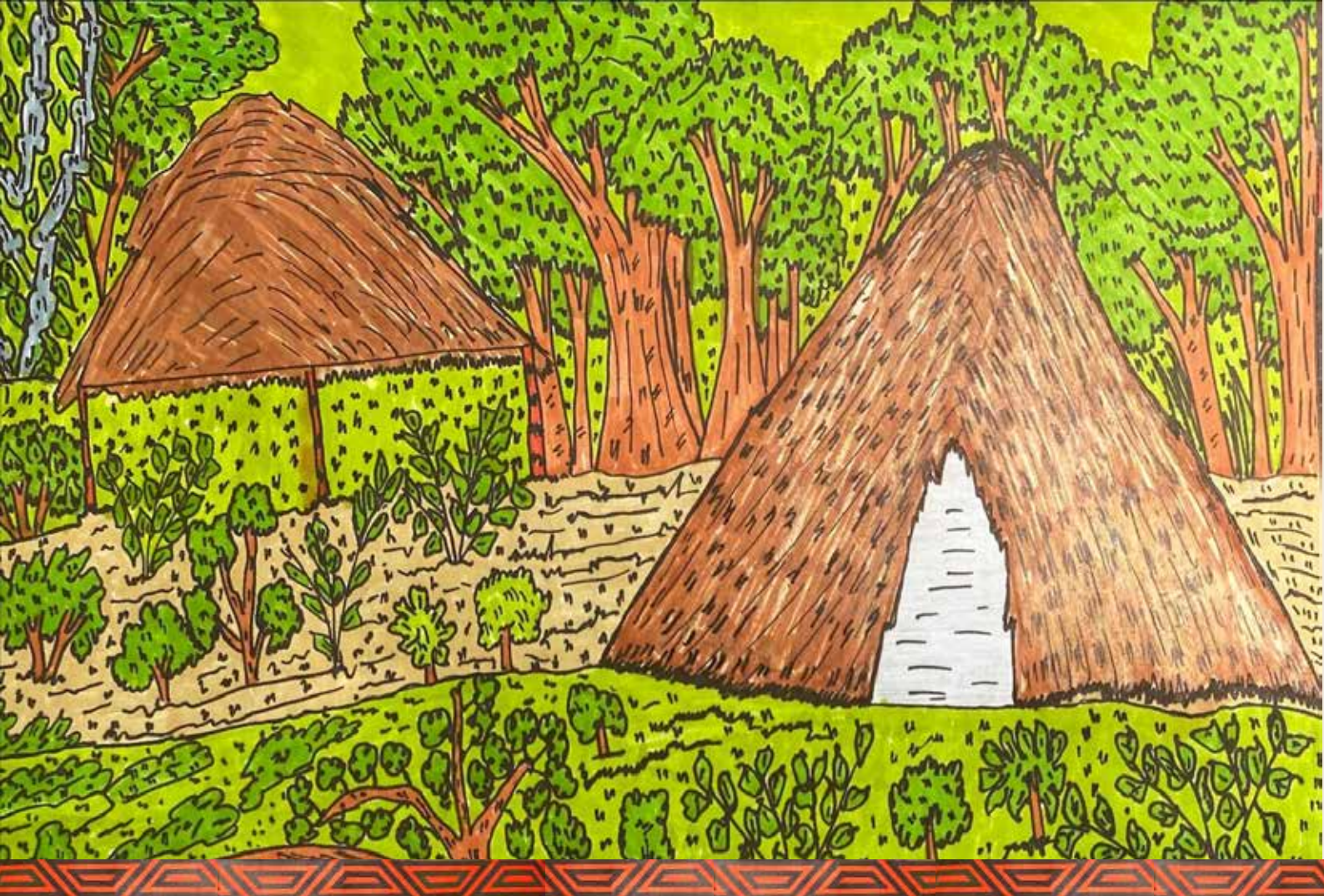
HIKE MYOKANATANUTU - satni yanumsalu hike mkojwakanutu ho ptowuxikowa hipokananu.

MITSHIKANANU - hkamhaka hma kamhapshinikko kamhakalurpira rimaxikowakapa kahwknantshri klu ralukna panerunkaka.

IHINKAKALURU - rekakhitkopa kluneru hepixlewata kluneru hi hepixlewata há kluneru himtuklewata satu shinikantshi kamhakalurupa . Halikaka hikakletkaluru waleni kihleru shinikantshi yinumsakaklu, phujewaka rixikowakapa shinikantshi kamhapiratkaluru phujetanu tokanha rixyawakapa rimaxjemaxikowakapa panerunkaka halukanru.

Hepomhalu hiyrunu yinumsakaklu hate walujyawakapko hkamhakopa ptowru yinwu halujyawaka rapojyapa , panerunkaka halujinipa hanu rixanu. Wale kahwakpiratkopa.





PL 6024/2019

Shinikantshi leyi (PL) tepotata hishtatowawo Mara Rocha(MDB) kamle hishinikanretlu hyohnikaxikowaka hkaniprexikowa hesewa hishtratshiwista Chico Mendes hyokmakikowaka katekoriya pahki nasyonawo seha xiwiso " wale raluka tshinreta hnikatkopa parna seha xiwiso. Raprowaxinipa PL konkreso nasyonawoya hi kyapre kamhakoplu hatnuhapo krosero to sowo há pokalpa, mapa poktshi hyapamxyawakapa hakriyanone hesewa Chico Mendes rumukata hwakota halukakaliru hitnumneya. Ha PL 6024/2019 ralinyatko halukaluru satukna heshponsapilitaxi hosha hiwekle ho hiweklu riwejinru yineru hamasonya.

ACRE | 2022/2023

Yonawahlo

Danielli Jatobá e Leilane Marinho

Wapikakanu

Ana Luiza Melgaço e Vera Olinda Sena

Hkoprotakyonhatko Patokanha

Lucas Artur Brasil Manchineri

Mayawletshi

Uhnepa Nukini

Ruhlexikowaka

Selene Fortini

Hkamhikowaka



Hepixatshri

